



MARIANA SHIPPING, JAPAN CO., LTD.

SANJU BLDG., 2-4, HATCHOBORI 3-CHOME, CHUO-KU, TOKYO 104-0032, JAPAN

TEL: 03-5541-2100

FAX: 03-5541-2101

Kota Salam's first call at Callao, Peru through West Coast South America 6 service

On 20 August, Kota Salam finally called at Callao, Peru for its first time as part of PIL's West Coast South America 6 (WS6) service! This maiden call came after PIL's announcement of adding Callao to our WS6 service in July this year.

Callao's port operator [DP World](#) kindly organized a ceremony to welcome the arrival of this 3,900-TEU vessel, and Master Capt. Shabbir Ahmed Khan also received a commemorative plaque from DP World on behalf of PIL.

With WS6, PIL can strengthen our mission of "Driving Connectivity" into the West Coast South America region, offering one of the fastest transit times from Peru and Chile to China. Together with our other West Coast South America services, customers have more options to ship their cargo with PIL from China and South Korea to West Coast South America and vice versa!

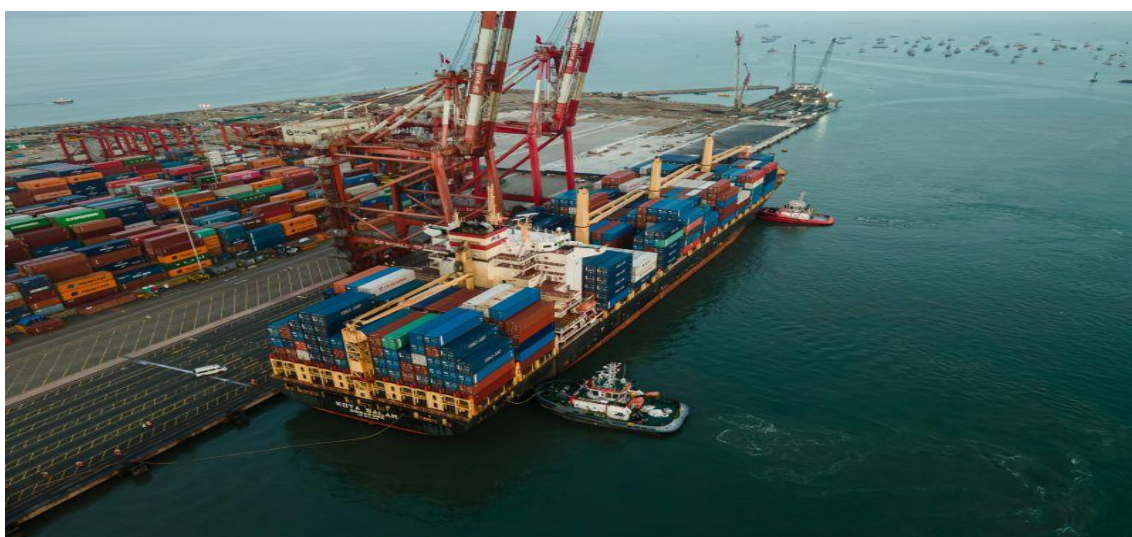


MARIANA SHIPPING, JAPAN CO., LTD.

SANJU BLDG., 2-4, HATCHOBORI 3-CHOME, CHUO-KU, TOKYO 104-0032, JAPAN

TEL : 03-5541-2100

FAX : 03-5541-2101





MARIANA SHIPPING, JAPAN CO., LTD.

SANJU BLDG., 2-4, HATCHOBORI 3-CHOME, CHUO-KU, TOKYO 104-0032, JAPAN

TEL: 03-5541-2100

FAX: 03-5541-2101

